



GRACE Follow-On

Science Data System Newsletter

Period: Mar 2025 – Mar 2026 (No. 28)

Contact: gracefo@jpl.nasa.gov

Felix Landerer¹, Annette Eicker², Himanshu Save³, Christoph Dahle², Mona Witkowski¹, JT Reager¹, Chris McCullough¹

¹ Jet propulsion Laboratory / California Institute of Technology, Pasadena, CA

² GFZ Helmholtz Centre for Geosciences, Potsdam, Germany

³ Center for Space Research, University of Texas, Austin, TX

GRACE Follow-On Mission: Highlights & Updates

Personnel Updates

- Frank Flechtner (GFZ) and Rob Gaston (JPL) are retiring after many years of managing the GRACE and GRACE-FO missions on both sides of the Atlantic. We are immensely grateful for their decades of hard work, expertise, and the many positive contributions they have made. The continuing success of the multi-decade GRACE program and its broad impact for science and applications is in no small part due to their tireless contributions. Please join us in thanking Frank and Rob for everything and wishing them the absolute best in their exciting next chapters!
- [Annette Eicker \(GFZ\)](#) has been selected as new Head of Section “Global Geomonitoring and Gravity Field” at the GFZ Helmholtz Centre for Geosciences, and she will manage the GFZ elements of GRACE-FO in her new role. Many of you know Annette from her significant research contributions that have advanced the utility and applications of gravimetric satellite Earth observations. Mona Witkowski (JPL) is succeeding Rob Gaston as Acting Project Manager on the JPL/NASA side. Mona has many years of experience and familiarity with GRACE-FO (and GRACE) in her role as the NASA Operations Missions Manager. Please join us in welcoming Annette and Mona in their new roles!

News & Announcements

- The NASA Senior Review 2026 took place on April 16, 2026, in Washington, DC. The US Project Team presented the mission’s science and applications merits, status and plans for the Fiscal Years 2027-2029 to a review panel to extend the mission for another 3-year period through Sep-2029. Results and recommendations are expected by mid-summer 2026.
- The GRACE-Continuity project passed a major milestone in Dec-2025: after a successful ‘KDP-D’ review with NASA, the project advanced into the final assembly, integration and testing phase. Launch is scheduled for Dec-2028, which will provide overlap with GRACE-FO.



- The **2026 GRACE-FO Science Community Meeting (GSTM)** is scheduled to take place from **October 13-15, 2026**, at GFZ in Potsdam, Germany. More info to follow soon, please mark your calendars.
- Presentations from the 2025 GRACE-FO Science Team Meeting are available at: <https://grace.jpl.nasa.gov/events/117/2025-grace-fo-science-team-meeting/>

Science & Applications Data Updates

Throughout this reporting period, the overall GRACE-FO data quality and system performance has remained stable and is in line with previous months.

The following **Level-1, 2 & 3 SDS data products** are now available at [NASA Earthdata](#) and GFZ's Information System and Data Center **ISDC**:

Level-1 SDS data products through **May 2026**:

- Update frequency: *weekly*
- Accelerometer data for GF-2:
 - ACX-L1B Accelerometer transplant data are available; this ACC product bundle is updated on a monthly cadence, with a latency similar to L2 products.

Level-2 & 3 data products through **Mar 2026**:

- Update frequency: *monthly*
- The current operational data release for L2 and L3 is **RL06.3** for JPL, GFZ and CSR, and uses the ACX2 data during the wide-pointing months.

The following **Level-3 data** products (global, land, ocean, ice) are available, based on the current L-2 release:

- JPL Tellus global mascon products:
 - https://grace.jpl.nasa.gov/data/get-data/jpl_global_mascons/
- GFZ GravIS land, ocean and ice products:
 - <https://gravis.gfz.de/>
- UT-CSR global mascon solutions:
 - http://www2.csr.utexas.edu/grace/RL06_mascons.html

Additional Data Resources:

- At GFZ's GravIS portal, a satellite-based groundwater product is available, spanning the period Apr-2002 through Sep-2023 (<https://gravis.gfz.de/gws>). This product has been developed within the EU Horizon 2020 Project G3P (Global Gravity-based Groundwater Product, see <https://www.g3p.eu/> for more information).
- More general background information about the technology and applications of satellite gravimetry missions is provided at GFZ's information portal [globalwaterstorage](#).



- All JPL/NASA GRACE-FO documentation, Technical Notes (TN-*), and ancillary files are available for download at <https://www.earthdata.nasa.gov/data/platforms/space-based-platforms/grace-grace-fo/grace-fo-documentation>

Other Mission Updates & News

GRACE-FO science data collection and processing updates:

- No changes to the science data collection or operations mode.
- [Solar Cycle #25](#): Solar Cycle 25 activity has been declining throughout the last 12 months, providing for a ‘smoother’ ride. Recent orbit altitude decay rates have reduced accordingly (Fig.1), with corresponding decreased non-gravitational forces on the two GRACE-FO satellites. More SC25 info here: <https://helioforecast.space/solarcycle>

Mission References

When using GRACE-FO data, please cite the **GRACE-FO Mission reference paper**:

- Landerer, F.W., Flechtner, F., et al., 2020, Extending the global mass change data record: GRACE Follow-On instrument and science data performance, *Geophys. Res. Lett.*, <https://doi.org/10.1029/2020GL088306>.

Science Community Resources:

- Proceedings and presentations from previous **GRACE/GRACE-FO Science Team Meetings** are available at [JPL](#) and at [GFZ](#).
- Do you have new GRACE-FO results, a conference presentation or paper publication you would like to share? Please send a copy of your GRACE and GRACE-FO related publications to grace@jpl.nasa.gov and grace_feedback@gfz.de (please also consider a 1-slide highlight summary of the main findings). Corresponding short blog articles may also be published at <https://www.globalwaterstorage.info>.

GRACE Follow-On: Mission Status

GRACE Follow-On: Orbit

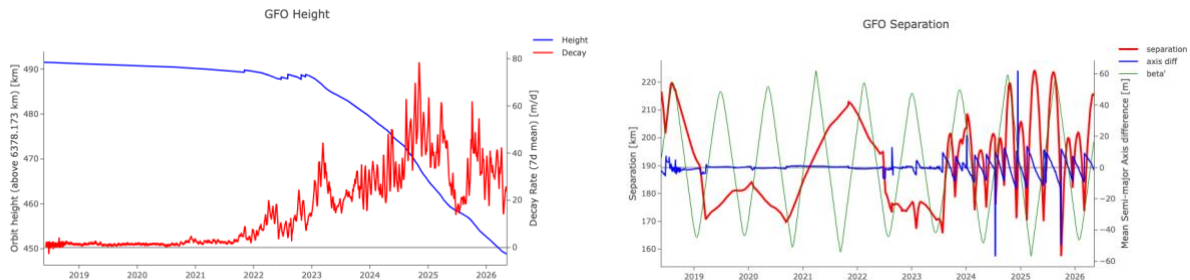


Figure 1: (left) Orbit altitude and daily decay rates [m/day] since launch. (right) Spacecraft separation distance and semi-major axis difference between GF1 and GF2, as well as beta-prime angle of the orbit plane (data and plots provided by K. Snopek, GFZ).

The GRACE Follow-On orbital parameters on 2026-05-07 were as follows:

Mean Altitude (>6378.1 km)	448.8
Altitude difference (GF2-GF1, m)	-1.7
Decay Rate (GF1/GF2) (7d mean, m/d)	23.7 / 24.0
Absolute Distance (km)	215.0
Drift (km/d)	-0.20
Sun Beta (deg)	20.8

Science-relevant Mission Events & Plans:

- Both accelerometers (ACCs) are operating and collecting observations in their nominal mode, Normal Range Mode (NRM). GF1 ACC data are used to generate an ACC transplant data product which is provided as the ACT1B product and can be used to substitute the GF2 ACC measurements through Dec-2022. In addition to the 'full' ACT-transplant, updated calibrated data information from the GF2 accelerometer has been incorporated into an improved ACH1B transplant product. This product is recommended for use in generating monthly gravity L2 products.



- NOTE: for Jan/Feb-2023 & Jul-2023 onwards, the ACT1B products for GF2 (only) are *empty*; to generate L2 and higher data products, we provide a calibrated ACH1B products available in the ACX2-L1B bundles.
- Center-of-Mass (CM) offset determinations are performed approx. every 6 months (see SOE/SCE Technical Notes for details).
- Additional calibration periods, spacecraft activities and events are highlighted in the Level-1 release notes and event logs.

Level-1, Level-2, Level-3 Data Products and Processing

Level-1 Data Processing & Delivery

- Level-1 data products (current operational version: L1A/B_v04 weekly; ACX-1B bundle on a monthly basis), which are available at NASA Earthdata and GFZ's Information System and Data Center (ISDC), are continuously updated approximately every 7 days. The Level-1 data includes all data required for the generation of Level-2 gravity field products. Please refer to Level-1 release notes, documentation, as well as to the Sequence-of-Events (SOE) logfile for important updates, comments and detailed description of the data, file formats, and conventions.

MWI Performance Statistics

MWI-GPS performance statistics are available in file [TN-01b_KBR_GPS] at [Earthdata](#) / [ISDC](#).

Level-1 Data Product Availability

- [see Appendix 1A (p. 8) for GRACE-FO Level-1 data]
- [see Appendix 1B (p. 8) for de-aliasing AOD1B model data]

Level-1 Release Notes & Sequence of Events

- [see Appendix 1C (p. 8)]

Level-2 Data Processing & Delivery

Level-2 Data availability

- Level-2 Release 06 data have been processed at JPL, GFZ and CSR and are archived at NASA Earthdata and GFZ ISDC. The Level-2 products include the monthly gravity fields from the three mission Science Data System centers (JPL, GFZ, CSR), as well as the corresponding atmosphere and ocean dealiasing (AOD) background model data.
- Please refer to the Level-2 Release Notes and documentation description of the data for file formats, updates, conventions, as well as important processing recommendations ([NASA Earthdata](#) / [ISDC](#)).
- [see Appendix 2A (p. 9) for overview tables on data availability].



Level-2 Ancillary Products, Technical Notes and Comments

- TN-14 contains C20 & C30 estimates derived from SLR and using Level-2 RL06 standards, updated in synch with Level-2 monthly releases. It is recommended to replace the native GRACE & GRACE-FO C20 & C30 coefficients with this product (Loomis et al., 2019).

TN-14 Data Access:

- @NASA: <https://www.earthdata.nasa.gov/data/platforms/space-based-platforms/grace-grace-fo/grace-fo-documentation>
 - @GFZ: https://isdc-data.gfz.de/grace-fo/DOCUMENTS/TECHNICAL_NOTES/
- TN-13[a,b,c] contains geocenter estimates using the methods of Swenson et al. (2010) and Sun et al. (2016), and is updated in synch with Level-2 monthly releases. It is recommended to augment the GRACE / GRACE-FO geocenter with this product for surface mass change estimation.

TN-13[a,b,c] Data Access:

- @NASA: <https://www.earthdata.nasa.gov/data/platforms/space-based-platforms/grace-grace-fo/grace-fo-documentation>
- @GFZ: https://isdc-data.gfz.de/grace-fo/DOCUMENTS/TECHNICAL_NOTES/

Level-3 Data Processing & Delivery & Availability

- The following SDS-generated **Level-3 data** products (global, land, ocean, ice) are available:
 - JPL Tellus global mascon & SDS harmonic products:
https://grace.jpl.nasa.gov/data/get-data/jpl_global_mascons/
 - GFZ GravIS land, ocean and ice products:
<https://gravis.gfz.de/>
 - UT-CSR global mascon solutions:
http://www2.csr.utexas.edu/grace/RL06_mascons.html
 - GSFC global mascon products:
<https://earth.gsfc.nasa.gov/geo/data/grace-mascons>
- Interactive GRACE & GRACE-FO data browsers (Level-3):
 - NASA/JPL: <https://grace.jpl.nasa.gov/data-analysis-tool>
 - GFZ: <https://gravis.gfz.de/>

Resources and Links:

SDS Data Archives (Level 1-3):

- NASA Earthdata (<https://www.earthdata.nasa.gov/data/platforms/space-based-platforms/grace-grace-fo>)
- GFZ ISDC (<https://isdc.gfz.de/grace-fo-isdc>)



Miscellaneous Links:

- For GRACE Follow-On mission updates and news, please visit <https://gracefo.jpl.nasa.gov> and <https://gfz.de/en/grace-fo>.
- The proceedings of previous GRACE / GRACE-FO Science Team Meetings are available at <https://www.gfz.de/en/grace/> or at <https://grace.jpl.nasa.gov/events/>
- **GRACE and GRACE-FO related publications** are available via searchable databases:
 - https://www-app2.gfz.de/grace-references/sort_date.html
 - <https://grace.jpl.nasa.gov/publications/>
 - For missing publications in the database, please contact Annette Eicker (grace_feedback@gfz.de) and the JPL team (grace@jpl.nasa.gov)



Appendix

1.A – Level-1 GRACE-FO Data Availability

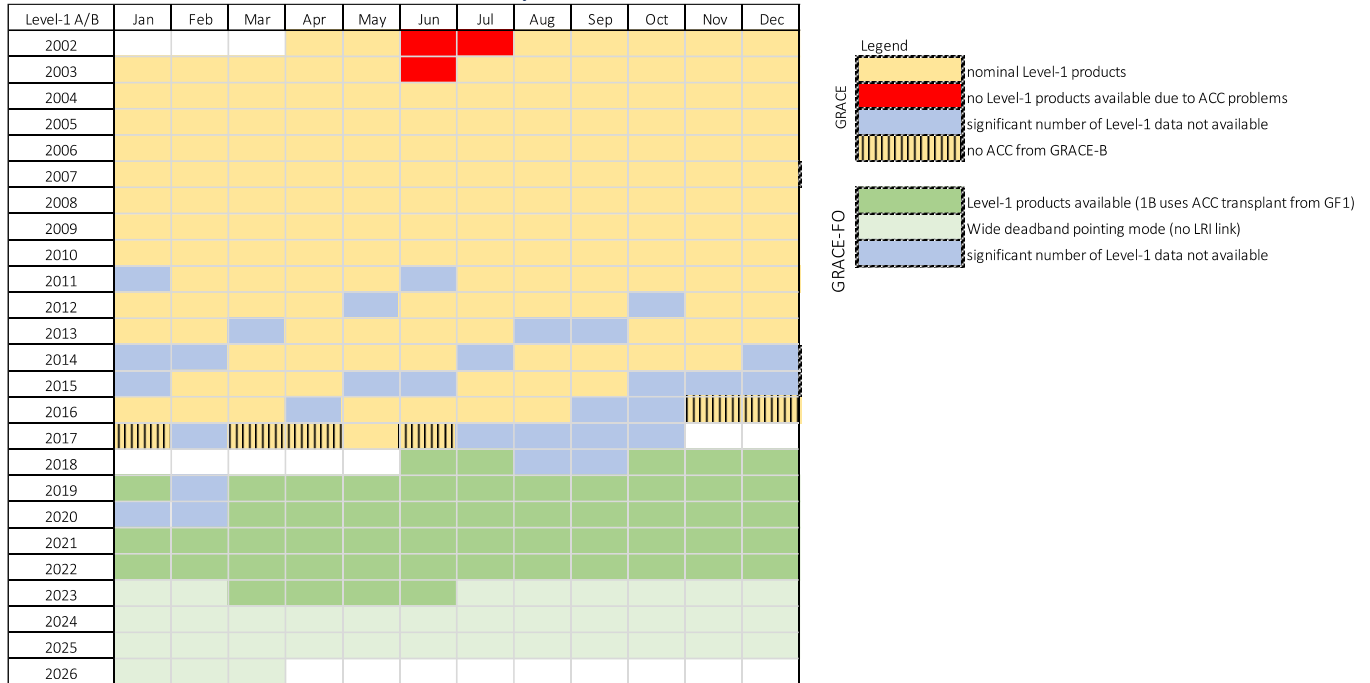


Table 1: Current version: Level-1A/B v04.

1.B – Level-1 De-aliasing Model AOD1B Data Availability

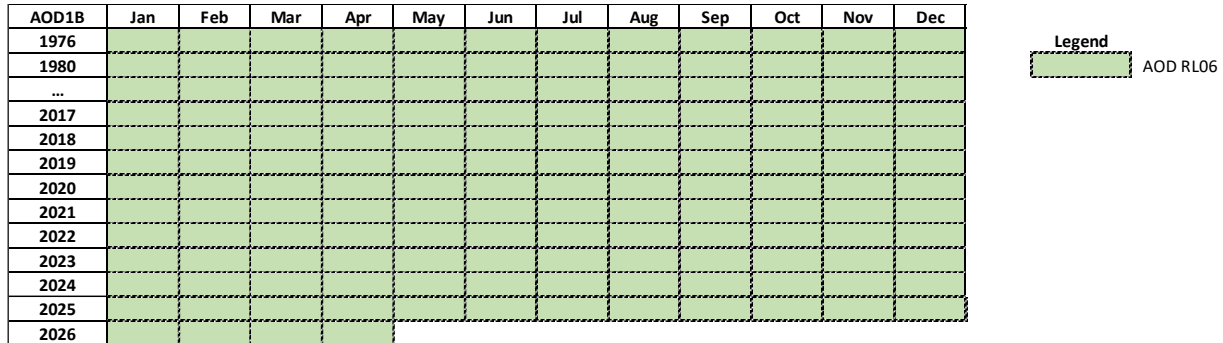


Table 2: AOD1B dealiasing model availability (current version used in GRACE-FO: RL06).

- For more information on the AOD de-aliasing AOD1B model please visit <https://www.gfz.de/en/aod1b/>.

1.C - Level-1 Release Notes & Sequence of Events



A machine-readable Sequence-of-Events file is available: [TN-01_SOE.txt]. An additional Spacecraft-Event log from JPL Level-1 operators is available as [TN-01a_SCE.txt].

- <https://www.earthdata.nasa.gov/data/platforms/space-based-platforms/grace-grace-fo/grace-fo-documentation>
- https://isdc-data.gfz.de/grace-fo/DOCUMENTS/TECHNICAL_NOTES/

2.A – Level-2 Product and Data Availability

JPL, GFZ & CSR

- Current Level-2 version: **RL06.3**
- All centers provide GSM solutions
 - Please check the individual Level-2 Release Notes for further details
- Additionally, JPL and GFZ provide corresponding monthly de-aliasing models [GAA, GAB, GAC, GAD]; CSR provides [GAC, GAD].

Level-2	Jan	Feb	Mar	Apr	May	Jun	Jul	Aug	Sep	Oct	Nov	Dec
2002				1	2			3	4	5	6	7
2003	8	9	10	11	12		13	14	15	16	17	18
2004	19	20	21	22	23	24	25	26	27	28	29	30
2005	31	32	33	34	35	36	37	38	39	40	41	42
2006	43	44	45	46	47	48	49	50	51	52	53	54
2007	55	56	57	58	59	60	61	62	63	64	65	66
2008	67	68	69	70	71	72	73	74	75	76	77	78
2009	79	80	81	82	83	84	85	86	87	88	89	90
2010	91	92	93	94	95	96	97	98	99	100	101	102
2011		103	104	105	106		107	108	109	110	111	112
2012	113	114	115	116		117	118	119	120		121	122
2013	123	124		125	126	127	128			129	130	131
2014	132		133	134	135	136		137	138	139	140	
2015	141	142	143	144	145		146	147	148			149
2016	150	151	152		153	154	155	156			157*	158*
2017	159*+		160*+	161*+	162*	163*+						
2018						1*	2*+			3*+	4+	5+
2019	6+	7*+	8+	9+	10+	11+	12+	13+	14+	15+	16+	17+
2020	18*+	19*+	20+	21+	22+	23+	24+	25+	26+	27+	28+	29+
2021	30+	31+	32+	33+	34+	35+	36+	37+	38+	39+	40+	41+
2022	42+	43+	44+	45+	46+	47+	48+	49+	50+	51+	52+	53+
2023	54+	55+	56+	57+	58+	59+	60+	61+	62+	63+	64+	65+
2024	66+	67+	68+	69+	70+	71+	72+	73+	74+	75+	76+	77+
2025	78+	79+	80+	81+	82+	83+	84+	85+	86+	87+	88+	89+
2026	90+	91+	92+									

GRACE
 Level-2 products
 no Level-2 products available

GRACE-FO
 Level-2 products available

Current Level-2 Release: RL06

+ Level-2 products (with ACC transplant)
 * partial / overlapping calendar-months

Table 3: GRACE and GRACE-FO Level-2 product availability.



3.A – Level-3 Product and Data Availability

JPL, GFZ & CSR

Level-3	Jan	Feb	Mar	Apr	May	Jun	Jul	Aug	Sep	Oct	Nov	Dec
2002				1	2			3	4	5	6	7
2003	8	9	10	11	12		13	14	15	16	17	18
2004	19	20	21	22	23	24	25	26	27	28	29	30
2005	31	32	33	34	35	36	37	38	39	40	41	42
2006	43	44	45	46	47	48	49	50	51	52	53	54
2007	55	56	57	58	59	60	61	62	63	64	65	66
2008	67	68	69	70	71	72	73	74	75	76	77	78
2009	79	80	81	82	83	84	85	86	87	88	89	90
2010	91	92	93	94	95	96	97	98	99	100	101	102
2011		103	104	105	106		107	108	109	110	111	112
2012	113	114	115	116		117	118	119	120		121	122
2013	123	124		125	126	127	128			129	130	131
2014	132		133	134	135	136		137	138	139	140	
2015	141	142	143	144	145		146	147	148			149
2016	150	151	152		153	154	155	156			157*	158*
2017	159*+		160*+	161*+	162*	163*+						
2018						1*	2*+			3*+	4+	5+
2019	6+	7*+	8+	9+	10+	11+	12+	13+	14+	15+	16+	17+
2020	18*+	19*+	20+	21+	22+	23+	24+	25+	26+	27+	28+	29+
2021	30+	31+	32+	33+	34+	35+	36+	37+	38+	39+	40+	41+
2022	42+	43+	44+	45+	46+	47+	48+	49+	50+	51+	52+	53+
2023	54+	55+	56+	57+	58+	59+	60+	61+	62+	63+	64+	65+
2024	66+	67+	68+	69+	70+	71+	72+	73+	74+	75+	76+	77+
2025	78+	79+	80+	81+	82+	83+	84+	85+	86+	87+	88+	89+
2026	90+	91+	92+									

GRACE
 Level-3 products
 no Level-3 products available

GRACE-FO
 Level-3 products available

Current Level-2 Release: RL06

+ Level-3 products (with ACC transplant)
 * partial / overlapping cal-months

Table 4: GRACE and GRACE-FO Level-3 product availability